



SHOP TALK

Apr 2023

Volume 358



EASTER HOLIDAY HOURS

Ontario branches will be **CLOSED** on **Good Friday** (April 7) and will **REOPEN** on **Easter Monday** (April 10).

Gatineau branch will be **OPEN** on **Good Friday** (April 7) and **CLOSED** on **Easter Monday** (April 10).

COMMUNITY GIVING

Ottawa Food Bank

FOOD SORT CHALLENGE

PRESENTED BY MONDEAU



Boone/Mondeau was delighted to return as the presenting sponsor of the Ottawa Food Bank's Food Sort Challenge event on Friday March 24th!

With the participation of Boone/Mondeau and 50 other teams, this event raised...

\$151,028

These funds are vital to ensuring food is distributed to the community through the Ottawa Food Bank's network of over 100 food programs across the city.



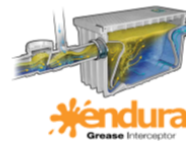
EVENTS

Upcoming Counter Days



canplas
INDUSTRIES LTD.

Join us as Canplas demonstrates their products, including the Endura Grease Interceptor.



BARRHAVEN
April 11

7am – 11am
52 Alti Place

OTTAWA
April 12

7am – 11am
1282 Algoma Rd.

NEPEAN
April 13

7am – 11am
1806 Woodward



KANATA
April 13

7am – 11am
20 Edgewater Rd.

Rheem will be onsite to show and discuss their products with us. Stop by to check out their products and ask questions.

PLUMBING



Don't let your money melt away with the spring thaw!

*While supplies last. No reserves.



SKU W-A1
Cast iron, 115 V, 1/3 HP
submersible sump pump 1
Phase with 10' cord



SKU V-A1
Cast iron, 115V, 1/3 HP
submersible sump pump
1 Phase with 10' cord



SKU RED10
1 1/4" x 1 1/2" Jackel check
valve



SKU SSPC
Smart sump pump
controller



SKU FG-2200
12V Battery back up for
sump pump system

Contact us for pricing | 613-746-6580 ext 1508 | plumbing@boone.ca

COMMERCIAL

NEWS

Farewell Stephane Viau

FAREWELL



After 29 years at Boone, Stephane Viau has moved on to a new venture.

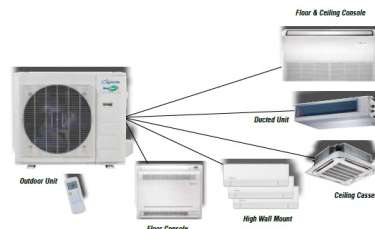
Stephane has spent the last 15 years serving as a Commercial Technician -

HVAC

IN STOCK

Comfort-Aire VMH UltraV Series

SINGLE/MULTI ZONE MINI-SPLITS
6,000 TO 48,000 BTUH



The new UltraV Series by Comfort-Aire boasts an operating range of - 22° to 122° F when cooling and - 22° to 86° F when heating!

Warranty - 10 years on compressor, 10 years on parts (Some limitations apply; see printed warranty for details.)

Want to know more? Download the VMH UltraV Series spec sheet [here](#).

Sales and Quotations rep in our Commercial Department. We would like to take this opportunity to thank him for his hard work and dedication to Boone and our customers. He will be missed and we wish him all the best in the future!

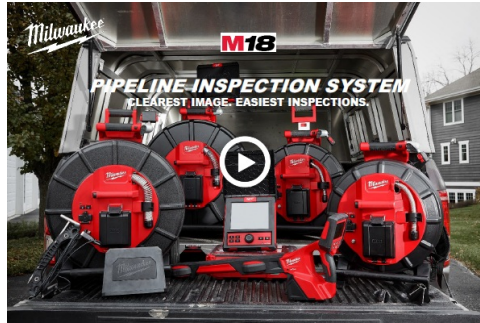
Comfort-Care

Text 613-746-7070
call 613-746-8560 ext. 1506 or
email hvac@boone.ca
for more information.

PRO TOOLS

PRODUCT INFO

Milwaukee Pipeline Inspection System



CLEAR CONFIDENTLY. INSPECT WITH CLARITY.

Believe in what you see. MILWAUKEE® is committed to delivering a comprehensive lineup of pipe inspection camera solutions for the service technician that helps improve the way they get work done. Thoughtful design, crisp image quality, and industry-leading durability delivers unmatched inspection solutions making it easier for you to find

the point of interest.

Shop Milwaukee Pipeline Products

Text 613-746-7070 call 613-746-8560 ext. 1508 or
email plumbing@boone.ca for more information.



Where Quality and Affordability Meet

Liquido offers contractor grade plumbing fixtures and parts at an affordable price. Save big on high quality, luxury toilets, tubs, faucets and more!

1000's of Overstock, Open Box and Scratch & Dent items offered at rock bottom pricing with full warranty. New stock arriving daily. Call to book an appointment to view our inventory today!



DISCONTINUED

MAAX - 66" X 36" X 24" CENTER DRAIN
DROP-IN TUB WHITE

**SPECIAL LIQUIDATION
PRICE**
\$449

Regular Price : \$1261

MODEL : 105515-000-001
Limited stock. While supplies last.

Contact our Liquido Department for more information.
Phone 613-746-8560 ext. 1643 or email liquido@mondeau.ca



New Product

Koncept-II Doors with KaliaPROTEK Film



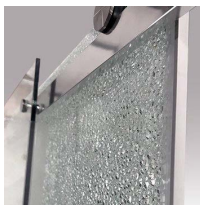
NEW! AVAILABLE APRIL 15

Always concerned with designing high quality products for everyday use and guaranteeing protection against all incidents that may occur in your home, Kalia understands the importance of increasing people's well-being on a daily basis and works day after day to find innovative solutions to meet this need.

That's why Kalia innovates and now offers the Koncept-II™ shower doors with KaliaPROTEK™ protective film!

KaliaPROTEK™ is a thin, transparent polyester protective membrane permanently bonded to the exterior of shower glass panels.

The KaliaPROTEK™ protective film (in very rare cases of glass breakage) effectively traps glass shards agglomerated on the surface of the membrane.



Suitable for R.P.A.'s, multi-user buildings and family residences.

Visit one of our 3 showrooms to speak with a consultant for more information.

Discover Our Showrooms



Ottawa Flagship Showroom

1282 Algoma Road, Ottawa ON K1B 3W8

Phone 613.746.7072
Toll free 1.800.267.1861
Fax 613.746.3242

infoalgoma@mondeau.ca



Kanata

20 Edgewater Street, Ottawa ON K2L 1V8

Phone 613.831.4974
Toll free 1.800.267.1861
Fax 613.831.2370

infokanata@mondeau.ca



Gatineau

130, Jean Proulx, Gatineau QC J8Z 1V3

Phone 819.776.3153
Fax 819.770.1088

infogatineau@mondeau.ca



[Locations](#) | [Contact Us](#) | [Careers](#) | [Privacy Policy](#)



Boone Plumbing & Heating | Head Office, 1282 Algoma Rd., Ottawa, K1B 3W8 Canada

[Se désabonner marketing@boone.ca](mailto:marketing@boone.ca)

[Mettre à jour mon profil](#) | [Avis de données de Constant Contact](#)

Envoyé parno-reply@boone.caen collaboration avec



Try email marketing for free today!